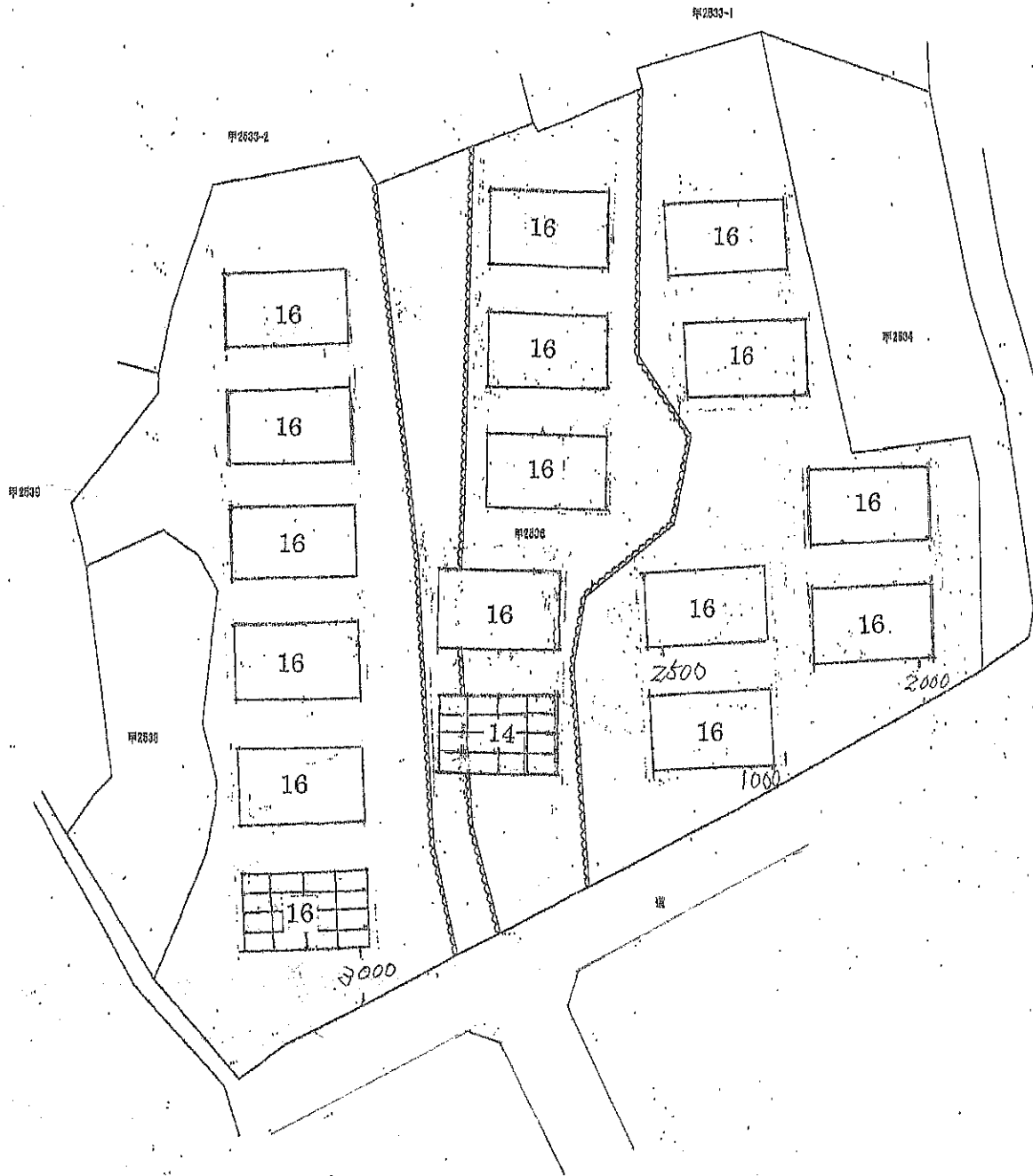
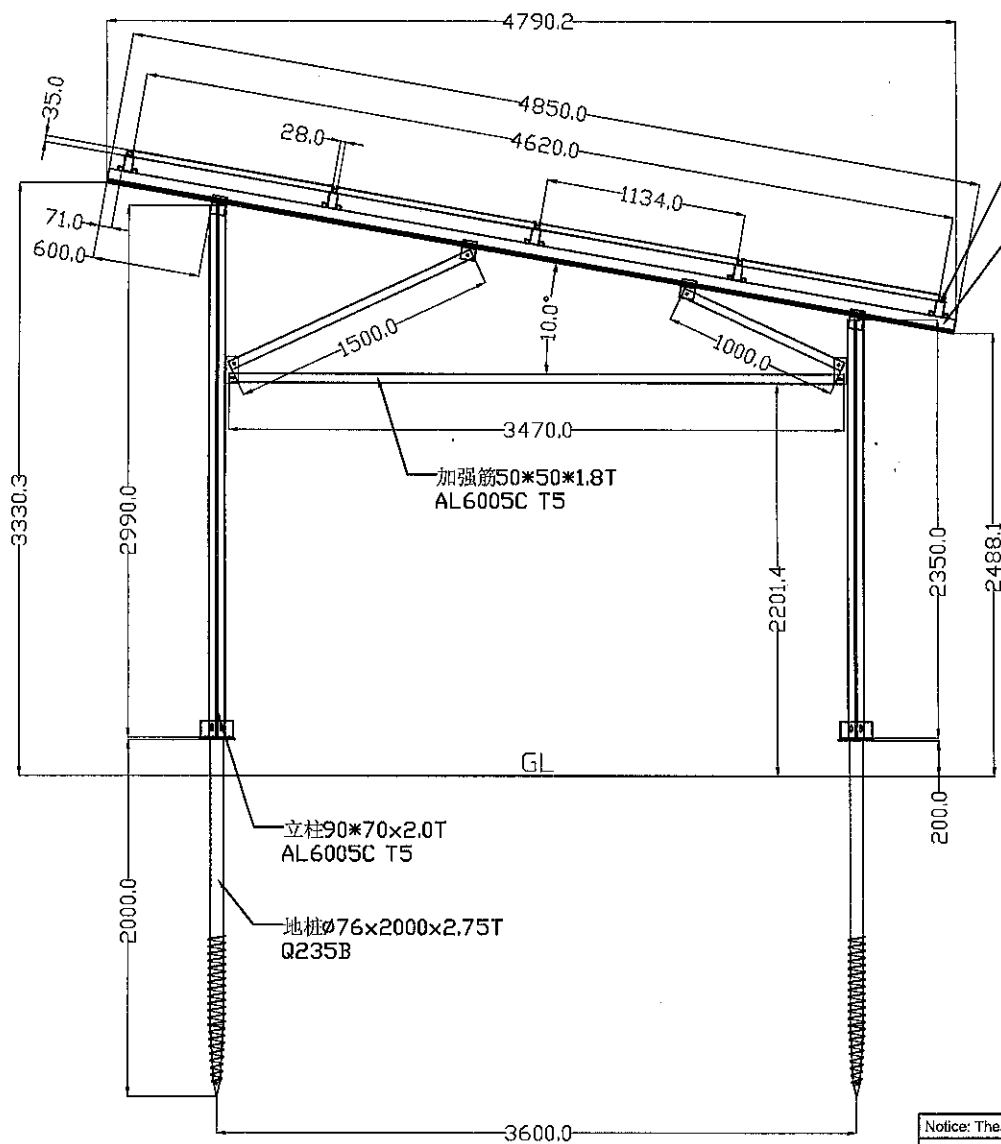


S 1/250



DO NOT SCALE DRAWING

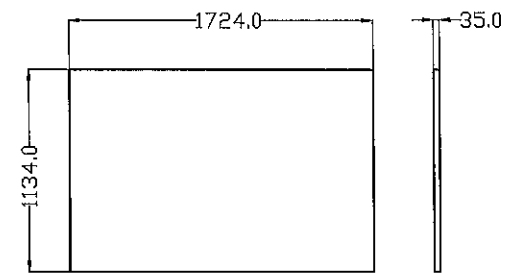
Modified Date	ECN NO.	Change Description	Rev.	Approved
---------------	---------	--------------------	------	----------



標条 95\*60\*1.4T  
AL6005C T5

斜梁 80\*60\*1.4T  
AL6005C T5

設計標準	JIS C8955-2017
設計用基準風速(S)	42 m/s
架台傾斜角度	10°
地上垂直積雪荷重(Zs)	30 cm
最低地上高	2200 mm
架台材質	アルミ架台
基礎種類	杭
パネル寸法	1724*1134*35
地表面粗度区分	区域 III

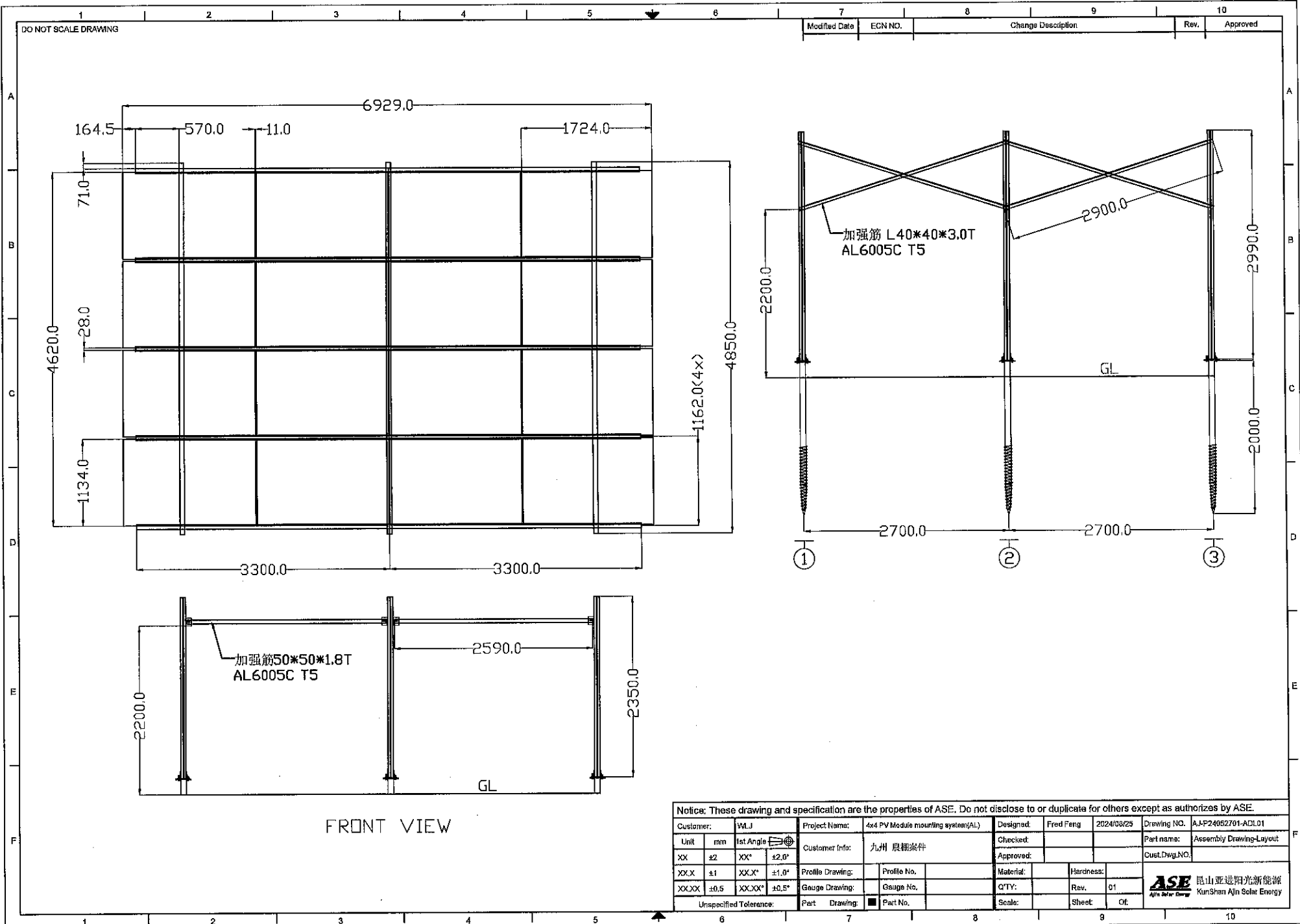


PV MODULE SIZE

Notice: These drawing and specification are the properties of ASE. Do not disclose to or duplicate for others except as authorized by ASE.

Customer:	VMJ	Project Name:	4x PV Module mounting system(AL)	Designed:	Fred Feng	2024/08/25	Drawing NO.	AJ-P24052701-ADS01
Unit	mm	1st Angle		Checked:			Part name:	Assembly Drawing-Side View
XX.X	±2	XX°	±2.0°	Approved:			Cust.Dwg.NO.	
XX.X	±1	XX.X°	±1.0°	Profile Drawing:	Profile No.		Material:	
XX.XX	±0.5	XX.XX°	±0.5°	Gauge Drawing:	Gauge No.		QTY:	
Unspecified Tolerance:		Part Drawing:	<input checked="" type="checkbox"/> Part No.	Scale:			Rev.	01
							Sheet:	01

**ASE**  
 昆山亚进阳光新能源  
 Kunshan Ajin Solar Energy



Modified Date	ECN NO.	Change Description	Rev.	Approved

Notice: These drawing and specification are the properties of ASE. Do not disclose to or duplicate for others except as authorized by ASE.

Customer:	WLJ	Project Name:	4x4 PV Module mounting system(AL)	Designed:	Fred Feng	2024/08/25	Drawing NO.	AJ-P24062701-ACL01
Unit	mm	1st Angle		Checked:			Part name:	Assembly Drawing-Layout
XX	±2	XX°	±2.0°	Approved:			Cust.Dwg.NO.	
XX.X	±1	XX.X°	±1.0°	Profile Drawing:	Profile No.		Material:	
XX.XX	±0.5	XX.XX°	±0.5°	Gauge Drawing:	Gauge No.		Hardness:	
Unspecified Tolerance:		Part Drawing:	<input checked="" type="checkbox"/> Part No.	QTY:		Rev.	01	
		Scale:		Sheet:		Of:		

昆山亚进阳光新能源  
 KunShan Ajin Solar Energy